

GB2 Large T-Handle

Features

- More substantial handle with circular, 'easy-fix' escutcheon that are mounted through a standard pierced aperture
- Lock cylinders are "shuttered" for weather-resistance, and handle can be water-sealed
- Locking and non-locking models available
- 180° rotation as standard, rotation can be limited to 90°, LH/RH when required

Material

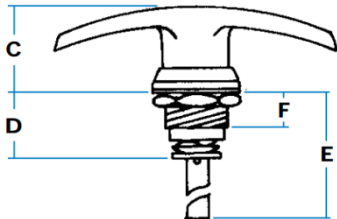
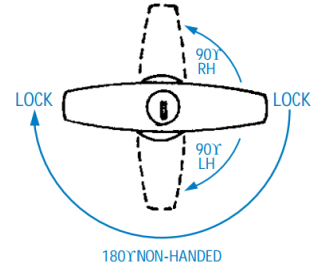
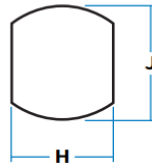
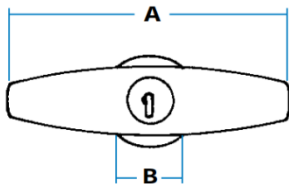
- Steel, chromium plated or black powder coated

Notes

- Mount through panel piercing against 'flats' on escutcheon, and secure with large brass nut
- Neoprene gasket and stainless spring spacing washer are provided
- 'FS' keys as standard with 'shuttered' keyway. Optionally 'FT' or 'DLP' key types also available
- **Contact Gripwell sales for cam pawl and centre-case options**



GB2-G00990
(Large T-handle with easy-fix mounting)



Handles operate through 180° as standard (non-handed), locking in two positions. To special order, rotation can be limited to 90° LH (clockwise) or 90° RH (anticlockwise), when handle will only lock in the rest position. Illustration shows handle with 'flats' vertical on escutcheon.

Part No.	Finish	Key	A	B	C	D	E	F	H	J
GB2-G0990	Chrome	Standard	100	30	30	26	63	15	22	24
GB2-G00990-01		FS880								
GB2-G0991		Non-Locking								
GB2-G0990B	Black	Standard								
GB2-G00990B-01		FS880								
GB2-G00991B		Non-Locking								



Large 'T' with die cast cam pawl
G00837

Handle With Die Cast Cam Pawl

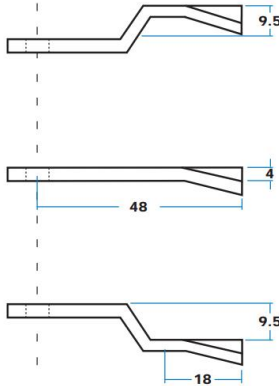
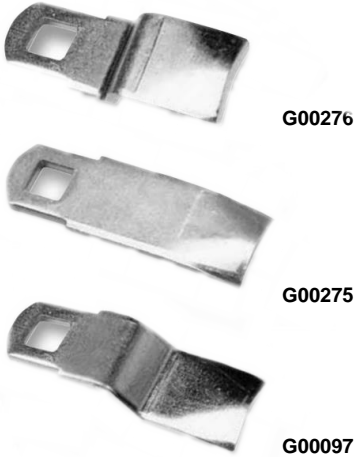
Two sizes of die cast cam are available (32 and 63 mm), which can be adjusted on a (plain) 8 mm shaft, and secured with concealed screw.

Cam Form and Multi-Point Cam Pawls

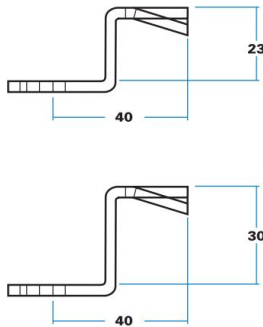
Features

- These pawls are in 3 mm thick mild steel, zinc plated with 8 mm square hole
- Cam-form types have a 4 mm 'leading edge' for good engagement. They can be used with most of our compartment locks, 'Compact' and 'Turn-button' models, and also with handles having 8 mm square shaft, as illustrated below.

Cam-Form Cam Pawls



Cam-Form Cam Pawls



Cam Pawl Fitted To Locking Handles

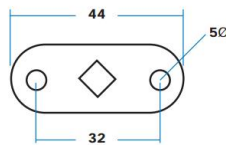


The 8 mm shaft is threaded M10 so that square form is retained. Cam Pawl can be adjusted using nut (GMP00221) and locknut (GMP00220) illustrated

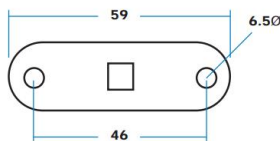
Two-Point Cam Pawls



G01911 (with in-line square)



G01389 (with square at 45° to centre line)



Die Cast Cams & Heavy Duty Cam Pawls

Features

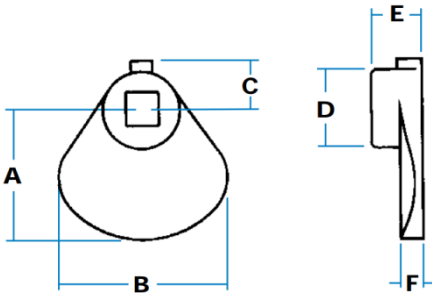
- Our die cast cams provide the simplest way of securing an enclosure door. They fit onto a plain, 8 mm-square shaft, and are clamped into position with the integral socket screw. A version is available with hole threaded M8, to suit corresponding round shaft.
- The range of heavy steel cams (below) is normally fitted to our 'drop-T' series, but they can be used with any 8 mm square shaft, normally threaded M10 with securing nuts to allow for adjustment and retention. Finish is bright zinc-plated.
- All cams are fitted with hexagon-head grub screw, adjusted by 3/32" Allen key (threaded 10/32 UNF x 3/8")



G27296
(Small cam)



G00837
(Large cam)



Part No.	Description	A	A1	B	C	D	E	F
G27296	Small cam, 8 mm square hole							
G27297	Small cam, M8 threaded hole	32	63	40	11	19	13	4
G00837	Large cam, 8 mm square hole							

Heavy-duty cam pawls, made in rolled-edge mild steel, 30 mm width x 5 mm deep, with 3 mm 'V' raise for cam-action



G02071
(‘Cranked up’)



G02069
(‘Straight’)



G02067
(‘Cranked down’)



G02059
(‘Hooked’)

